



37260 Sand Burr Lane
Prairie du Chien, WI 53821-8869 U.S.A.
www.gvgovier.com
gvgovier@mhtc.net

Enclosed is the summary of the (Fender Tag Assembly) Visual Inspection on the **1970 PLYMOUTH 'Cuda 2 Door Hardtop** VIN **BS23V0B192999** I did for you on August 18, 2003.

I have enclosed a "gray sheet" with names and numbers of businesses that have most items to replace any items that are missing or incorrect.

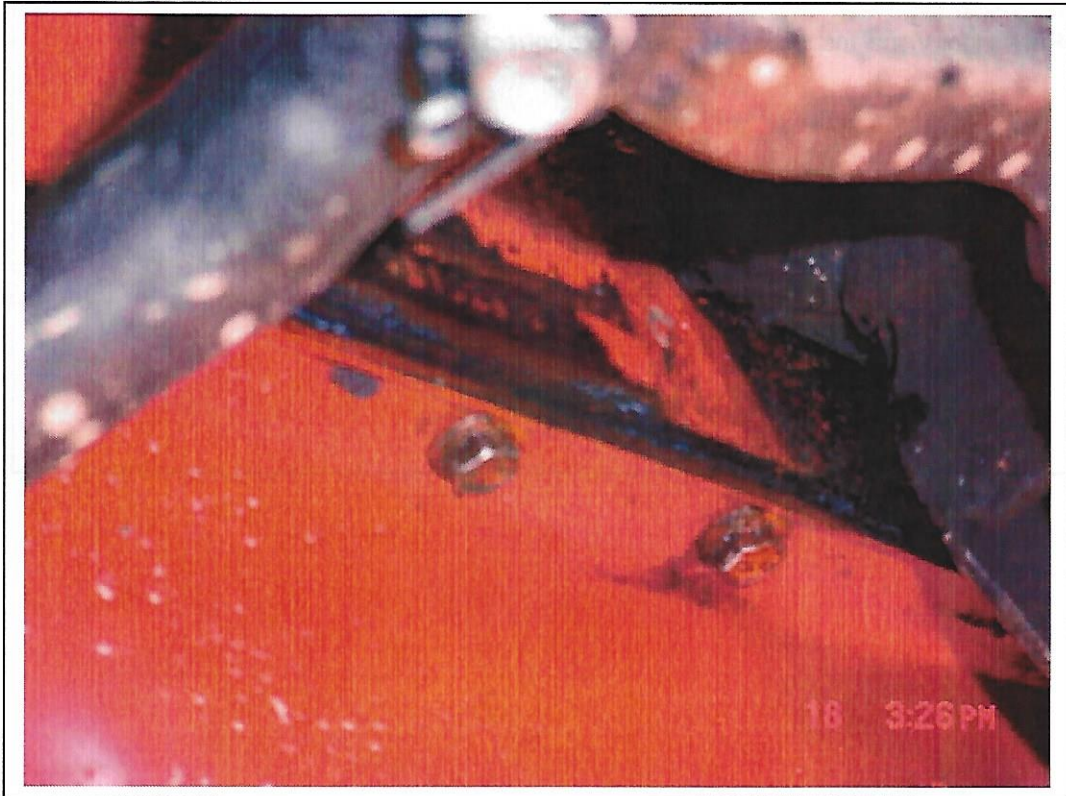
NUMBERS MATCHING

On your **1970** Model Year vehicle, there are **7** VIN's on the vehicle that determine "Numbers Matching", a Broadcast Sheet is a bonus, if found. The warranty brochure and owners manual are important documents.

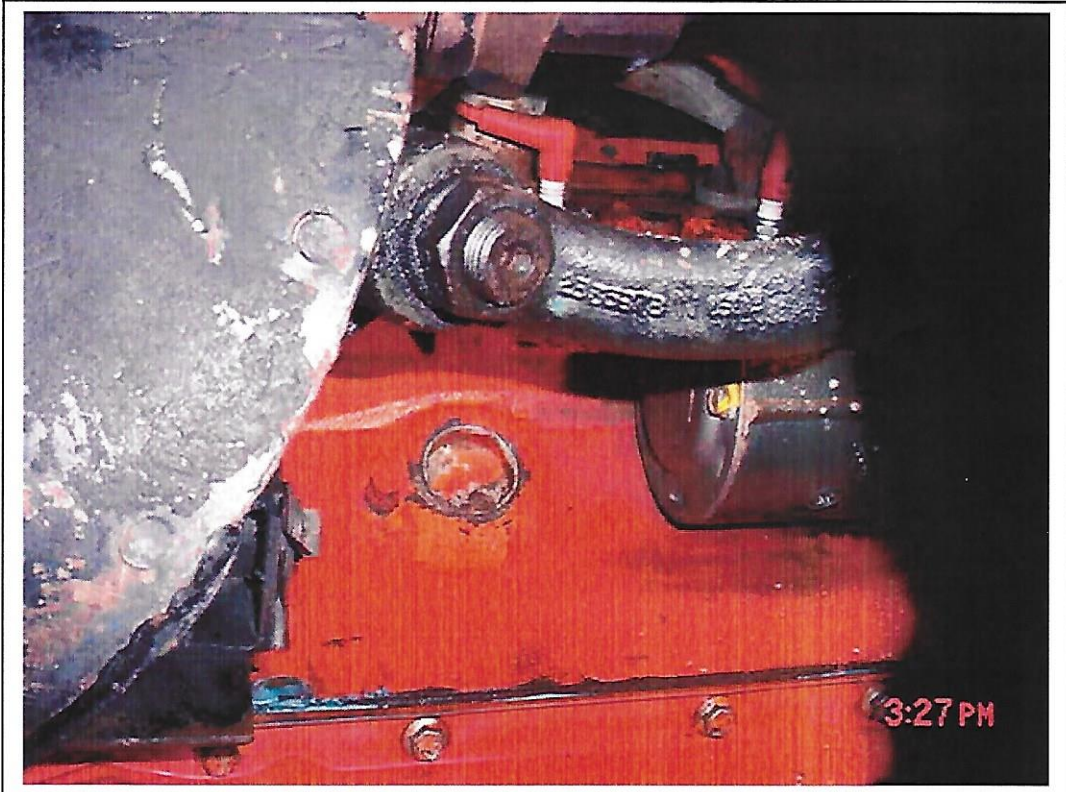
1. Dash VIN - Found on drivers side of the dash, visible through the windshield.



5. VIN stamped on Engine-found on passenger side lower block.
This is the original engine for the vehicle.



A. The casting date is on either side of the block, below the head.



6. VIN stamped on Transmission-found on passenger forward side of the Manual Transmission case. This is the original transmission for the vehicle.
- A. The number 3023 is the 10K date code, which decodes as November 07, 1969. The 340 is a sequence number. You can see the last 8 digits of the VIN on the top row.



- A. The casting date of the 4-Speed manual transmission is found on the drivers' side forward of the side cover. The date looks to be 10X07 (October 07, 1969).

