

## 1971 PLYMOUTH 'Cuda 2 Door Hardtop

26 EN2
+N41 N42 N85 N96 R26+
J25 J45 M21 M25 M31 M88
V1X U A33 A62 C16 C55
GF7 H6F7 000 216 001990
E74 D21 BS23 R1B 295953

**The fender tag is read from left to right, and from Bottom to Top**

E74 Engine: 426 2- 4bbl 425hp V8 426 HEMI  
D21 Transmission: 833 18 spline Hemi 4spd  
BS Car Line: PLYMOUTH 'Cuda  
23 Body Type: 2 Door Hardtop  
R Engine: 426 2- 4bbl 425hp V8 426 HEMI  
1 Model Year: 1971 G series  
B Assembly Plant: Hamtramck  
295953 Assembly Plant Sequential Number

GF7 Body Paint: Sherwood Green Metallic  
H Trim Code: High  
6 Front Seat: Vinyl Buckets  
F7 Interior: Green  
000 Upper Door frame paint: None  
216 Scheduled Production Date: Feb 16 1971  
001990 Vehicle Order Number

V1X Black Vinyl Top  
U Build to Specifications for United States  
A33 Track Pak  
A62 Rallye Instrument Cluster  
C16 Woodgrain Console w/ashtray  
C55 Front Bucket Seats

J25 Variable Speed Wipers w/ Electric Washers  
J45 Hood Pins  
M21 Drip Rail Mouldings  
M25 Body Sill Mouldings  
M31 Body Belt Mouldings  
M88 Rear Deck Molding Treatment

N41 Dual Exhaust System  
N42 Chrome Exhaust tips  
N85 Tachometer  
N96 Carb Fresh Air Package SHAKER HOOD  
R26 Radio- AM w/ stereo cassette player

26 Radiator - 26" Width  
EN2 End of fender tag codes. DESIGNATED LINE 2 BUILD

## 1971 PLYMOUTH 'Cuda 2 Door Hardtop

26 EN2 +N41 N42 N85 N96 R26+ J25 J45 M21 M25 M31 M88 V1X U A33 A62 C16 C55 GF7 H6F7 000 216 001990 E74 D21 BS23 R1B 295953
---

**The fender tag is read from left to right, and from Bottom to Top**

E74 Engine: 426 2- 4bbl 425hp V8 426 HEMI  
D21 Transmission: 833 18 spline Hemi 4spd  
BS Car Line: PLYMOUTH 'Cuda  
23 Body Type: 2 Door Hardtop  
R Engine: 426 2- 4bbl 425hp V8 426 HEMI  
1 Model Year: 1971 G series  
B Assembly Plant: Hamtramck  
295953 Assembly Plant Sequential Number

GF7 Body Paint: Sherwood Green Metallic  
H Trim Code: High  
6 Front Seat: Vinyl Buckets  
F7 Interior: Green  
000 Upper Door frame paint: None  
216 Scheduled Production Date: Feb 16 1971  
001990 Vehicle Order Number

V1X Black Vinyl Top  
U Build to Specifications for United States  
A33 Track Pak  
A62 Rallye Instrument Cluster  
C16 Woodgrain Console w/ashtray  
C55 Front Bucket Seats

J25 Variable Speed Wipers w/ Electric Washers  
J45 Hood Pins  
M21 Drip Rail Mouldings  
M25 Body Sill Mouldings  
M31 Body Belt Mouldings  
M88 Rear Deck Molding Treatment

N41 Dual Exhaust System  
N42 Chrome Exhaust tips  
N85 Tachometer  
N96 Carb Fresh Air Package SHAKER HOOD  
R26 Radio- AM w/ stereo cassette player

26 Radiator - 26" Width  
EN2 End of fender tag codes. DESIGNATED LINE 2 BUILD

## Detailed Visual Inspection

1971 Plymouth Hemi 'Cuda 2 Door Hardtop

V.I.N. BS23R1B295953      Mileage 79,203

Area	Condition
<u>01 BODY &amp; PAINT: Top: V1X Black Vinyl Roof, Bottom GF7- Sherwood Green in Excellent</u>	<u>1</u> 2 3 4 5 6
<u>02 CHROME &amp; GLASS: Moldings/Pot metal and Glass in excellent condition</u>	<u>1</u> 2 3 4 5 6
<u>03 INTERIOR &amp; SEATS: Trim H6F7 now H6XW Buckets, dash pad, carpeting, rallye Instruments, Wood grain Steering wheel, AM Radio OPTIONS: console, stereo cassette</u>	<u>1</u> 2 3 4 5 6
<u>04 ENGINE: Opt 426 cu in. 425hp w/2-4bbl Carter Carburetors, Valve Covers: Stock, PCV: Barrel, Intake manifold: Stock/Aluminum, Exhaust manifolds: Stock/Cast Iron, Air Cleaner: Black Shaker.</u>	<u>1</u> 2 3 4 5 6
<u>05 ENGINE COMPT: Radiator #3443959, Wiper Mtr: Variable Speed, Battery:Red Cap, Battery Cables: Correct, Brake Master cyl, Manual Steering box</u>	<u>1</u> 2 3 4 5 6
<u>06 CHASSIS: Trans: 833 18 spline Hemi 4spd w/9.75" Dana 60 Axle. Dual Exhaust w/ H-Pipe, Mufflers &amp; Resonators, Floor Pan is not undercoated, Ft Sway Bar.</u>	<u>1</u> 2 3 4 5 6
<u>07 TIRES/Wheels: Size/sidewall/brand: F60x15" GoodYear Polyglas GT raised white letter, Width/Style: 15x7" Steel Wheels w/Dog Dish Hub Caps.</u>	<u>1</u> 2 3 4 5 6
<u>08 TRUNK: Everything Present and in excellent condition: Trunk Floor, Jack Mast, Jack Base, air canister, F78x14" BFG collapsible tire &amp; wheel, Trunk mat: Repro</u>	<u>1</u> 2 3 4 5 6
<u>09 SAFETY CHECK: Everything is in working condition</u>	<u>1</u> 2 3 4 5 6
<u>10 OVERALL IMPRESSION: Correctly Restored with attention to detail</u>	<u>1</u> 2 3 4 5 6

NUMBERS MATCHING: 1-BODY-2 FENDER TAG BROADCAST  
CORRECT : ENGINE TRANSMISSION

In consideration of present condition = GRADE 1

This detailed visual inspection includes a 10-category written report and a decoding of the fender tag.

Here is the summary of the visual inspection on the 1971 Plymouth Hemi Cuda 2 Door Hardtop

VIN BS23R1B295953

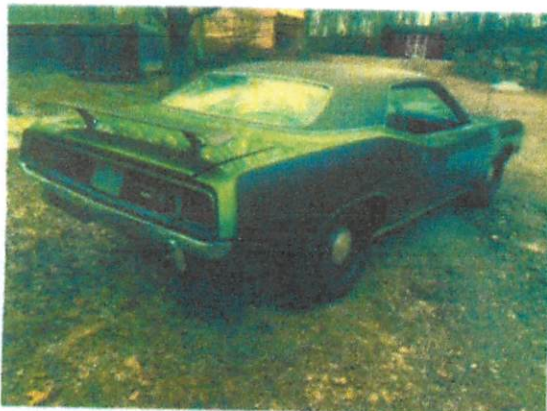
RH front view



LH front view



RH rear view



LH rear view

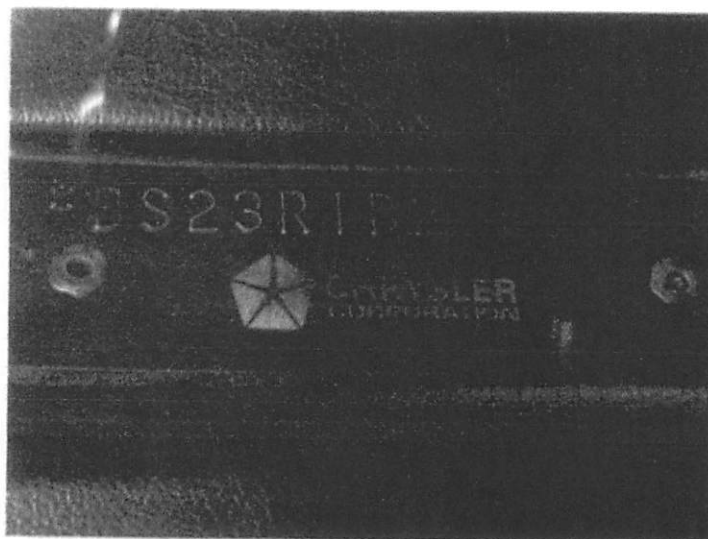


## NUMBERS MATCHING

On your 1971 Model year vehicle, there are 6 VINS that determine "Numbers Matching" plus the door decal, but only if it is an original decal.

<u>ITEM</u>	<u>FINDINGS</u>
Dash VIN.	Verified as correct with correct rivets.
Primary body codes.	Verified as correct found on the back of the radiator support.
Secondary body codes.	Verified as correct and in its proper location
Body code plate aka fender tag	Verified as correct located on the drivers inner fender.
VIN stamping on engine	Verified as correct block without VIN stamping
VIN stamping on transmission	Verified as correct transmission without VIN stamping
Door VIN Decal.	Verified as correct; reproduction decal

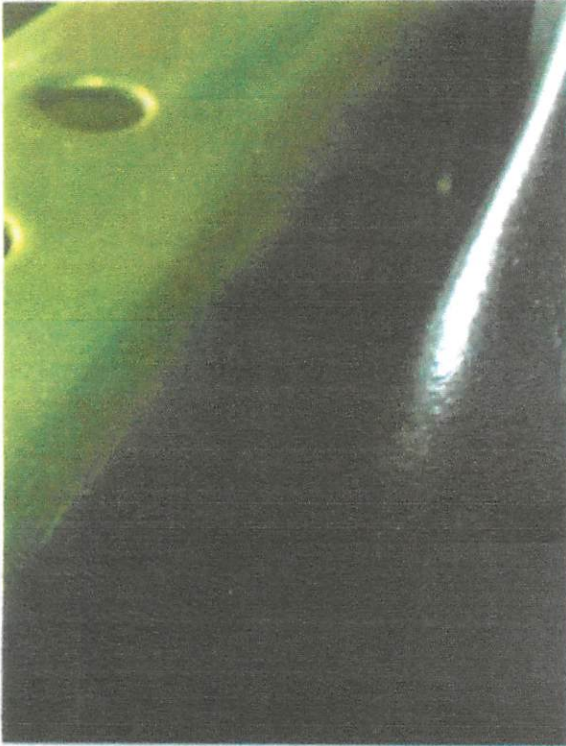
1. Dash VIN – Found on drivers side of dash, visible through the windshield.



2. Primary body code-typically found on the backside of the radiator support.

A. Body code numbers include assembly plant, model year and last six digits of the VIN.

The meaning of the body codes is explained in the enclosed decoding of the fender tag.



3. Secondary body code-typically found on the cowl, between the master cylinder and the windshield.

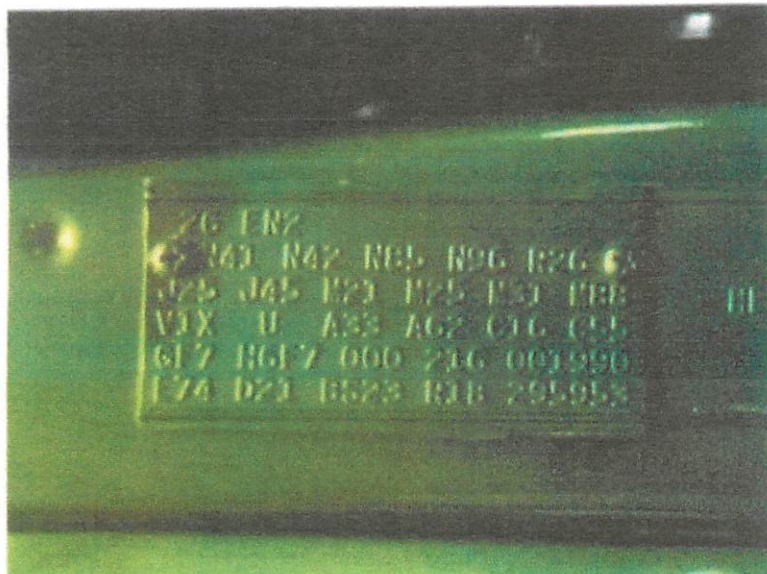
A. Body code numbers include assembly plant, model year and last six digits of the VIN.





4. Fender tag-found underhood near battery, VIN is on the bottom row of the tag.

Enclosed is a decoding of the fender tag and some related paperwork.



Owners Manual.

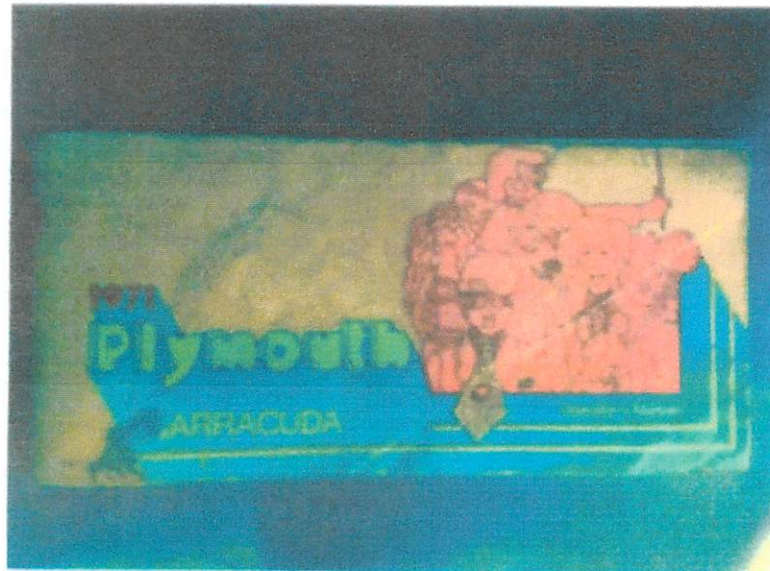
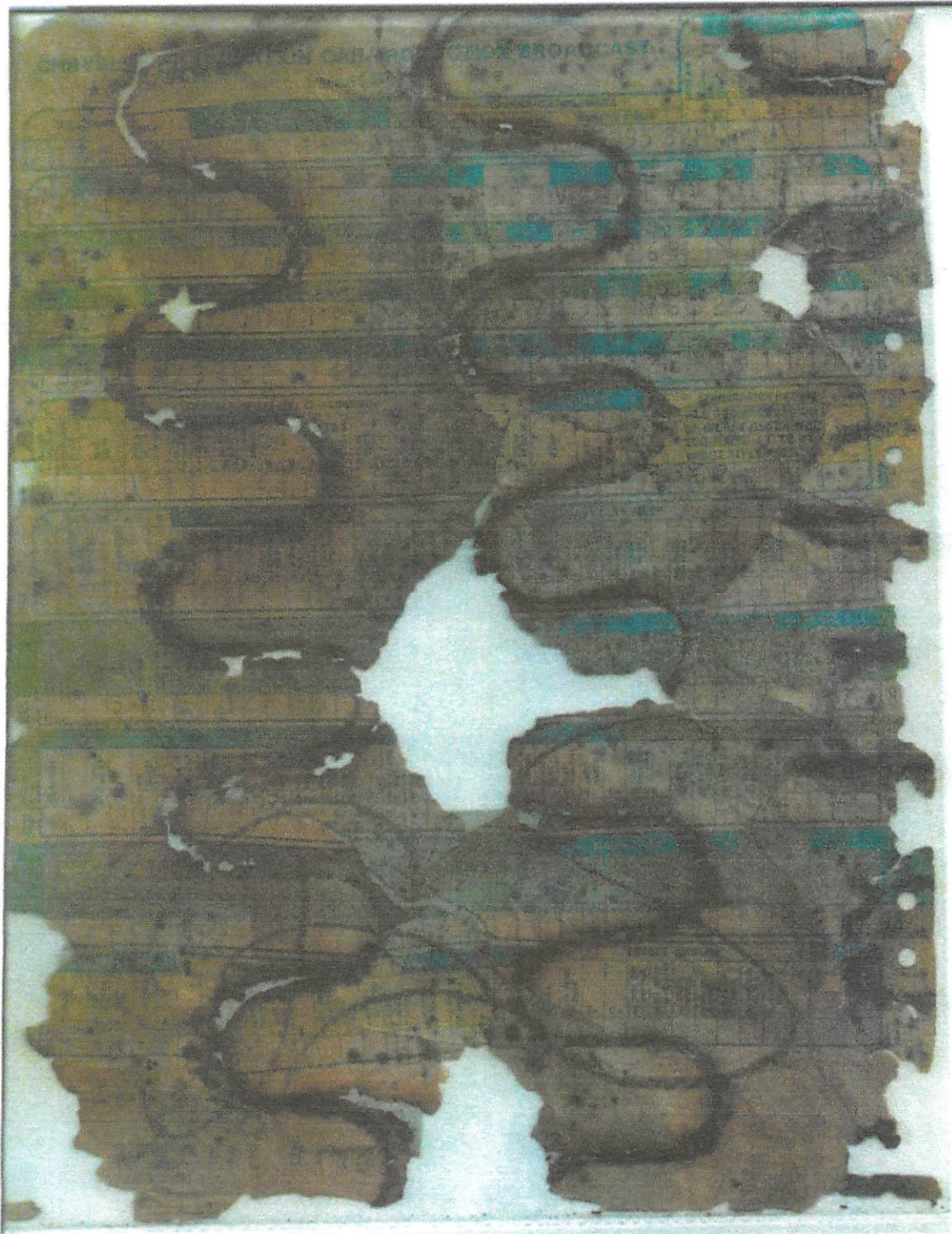
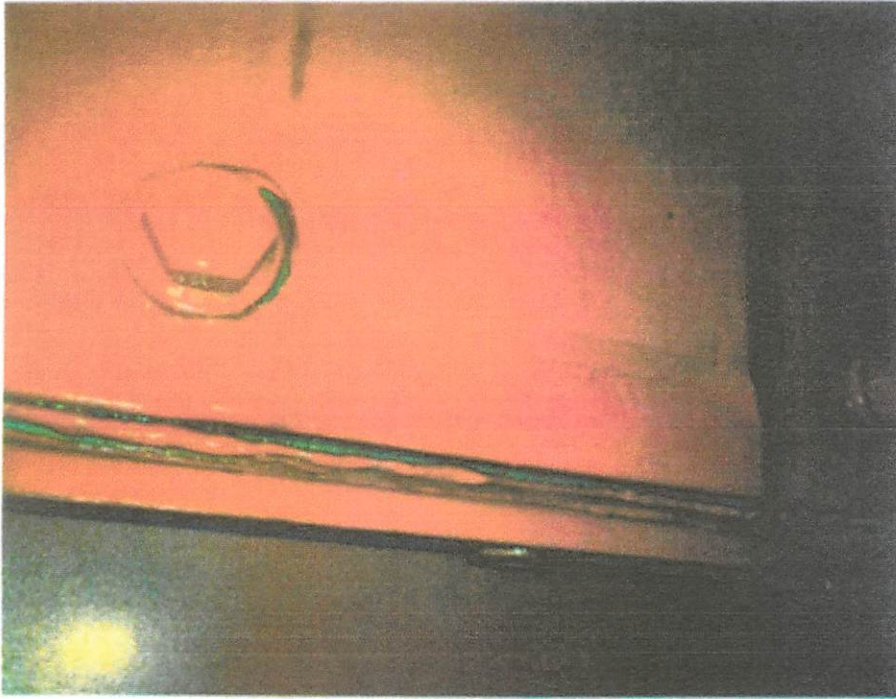


Photo of broadcast sheet.

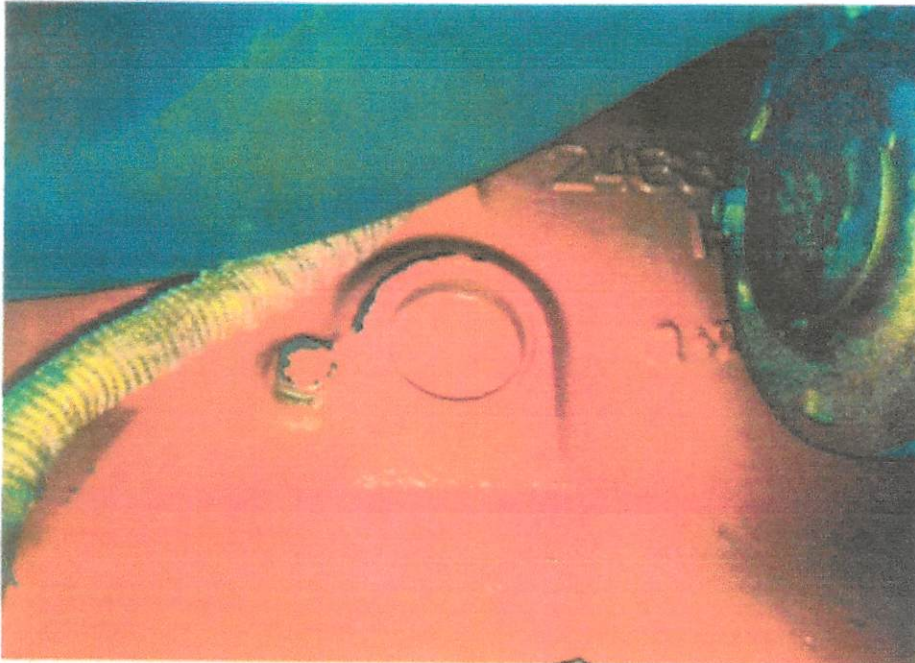




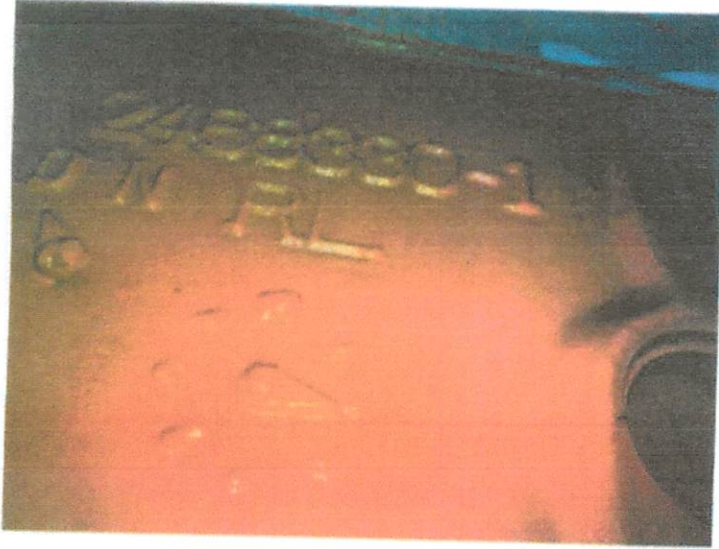
5. VIN is normally stamped on engine pad-found on passenger side lower block.  
This is a correct unstamped replacement block for this vehicle



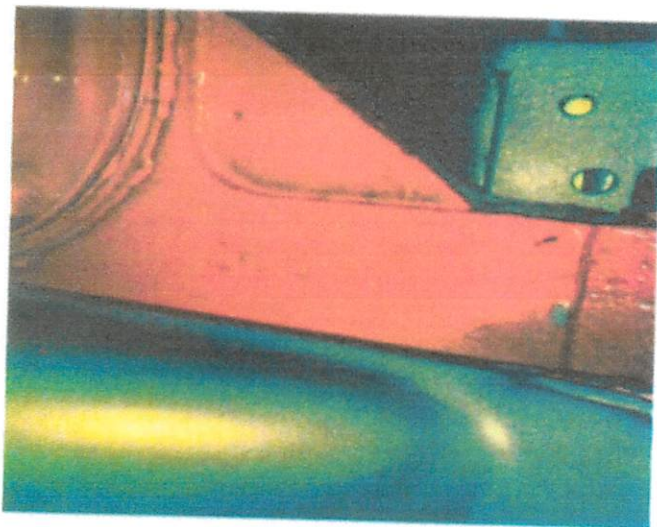
- A. The casting date on a Hemi is on the drivers side of the block , behind the starter.
- B. The casting date is: 7-28-69



B. Casting Number and clock is found on the passenger side of a Hemi block.  
The casting number is 2468330-1



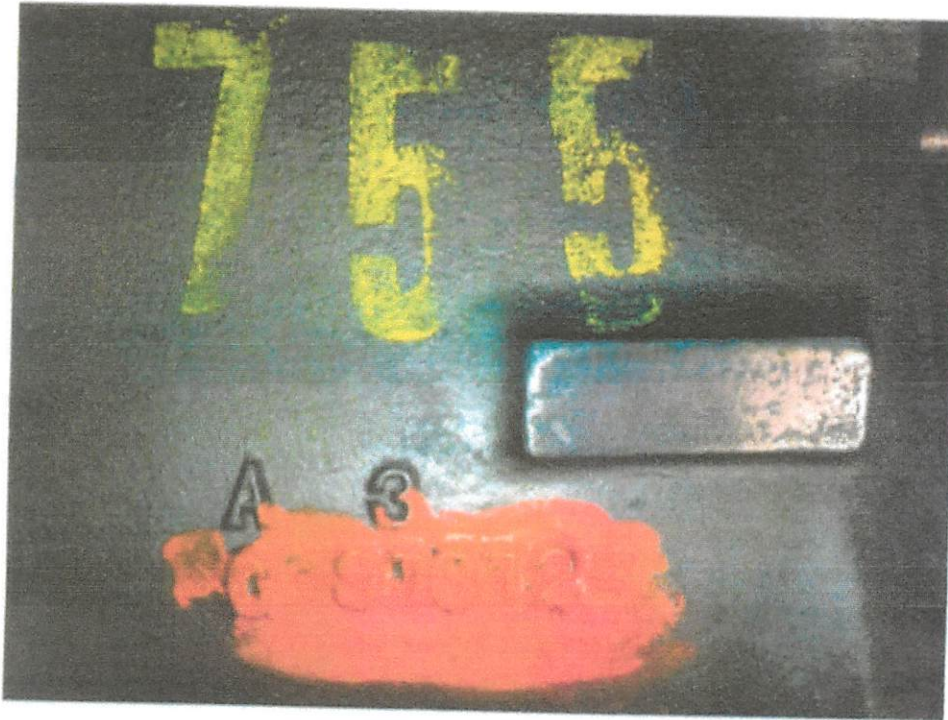
426 CID Hemi. There is also the engine ID stamped on the oil pan rail, below the starter on a Hemi. The meaning to the stamped numbers are NM 426 3033 65520 ( Nov 16, 1970). THE 426 BLOCK IS AN "RB" ENGINE.





6. VIN is normally stamped on Transmission—found on passenger side of the manual transmission case.

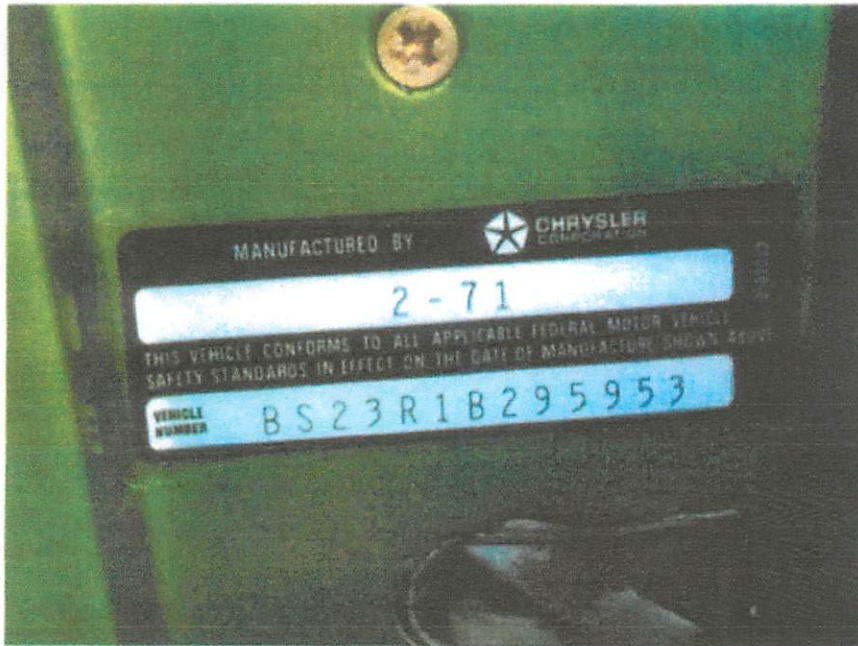
This transmission is the correct part and dated correctly but the VIN on the pad is not legible therefore it can not be determined whether or not this is the original transmission for this car.



A. Correct factory castings and markings.



7. Beginning in 1970, there should be a door VIN decal-found on the backside of the drivers door. It will tell the month and year of manufacture. At the B-plant it is mounted horizontally. This decal is a repro of the original.



Correct and original Pistol Grip Shifter and cassette player.





This vehicle comes with the following factory documentation: Original broadcast sheet and Owner's manual.

Summary:

Engine Cast:	7-28-1969
Engine Assembled:	11-16-1970
Transmission Casting number:	Correct
Door VIN Decal:	02-1971

The scheduled production date of the 1971 Plymouth hemi 'Cuda 2 Dr Hardtop is on o about 216-February 16, 1971 so all original items on the vehicle should be dated before that date.

NOTE: LH & RH is determined from the driver's seat. LH = Drivers side of the vehicle.