

CAM FACTS: What You Need To Know To Choose A Cam

CHEVY RUMBLE

CHEVY RUMBLE

**ART OF
THE FIND
'55-'57
PARTS**

LESS-IS-MORE TECH TIPS

25 MOST COMMON ENGINE-BUILDING MISTAKES

And How To Easily Avoid Them

21 F-BODY PERFORMANCE TIPS

To Help Round Up Mustangs

RAM'S HORN MANIFOLDS

The Old, The New
& The Fake

BRAKE BASICS

There's More Than
Just Stopping

1.6 ROCKER

ARM INSTALL

A Shade-Tree
Mechanic Lesson

DECEMBER 2004

\$4.99US \$6.99CAN



0 74470 01420 1
www.chevyrumble.com

**MOTION
427 VETTE**

A Rare Find Indeed



FeatureChevy

STORY AND PHOTOGRAPHY BY BOB CARPENTER

THIRD TIME'S THE CHARM

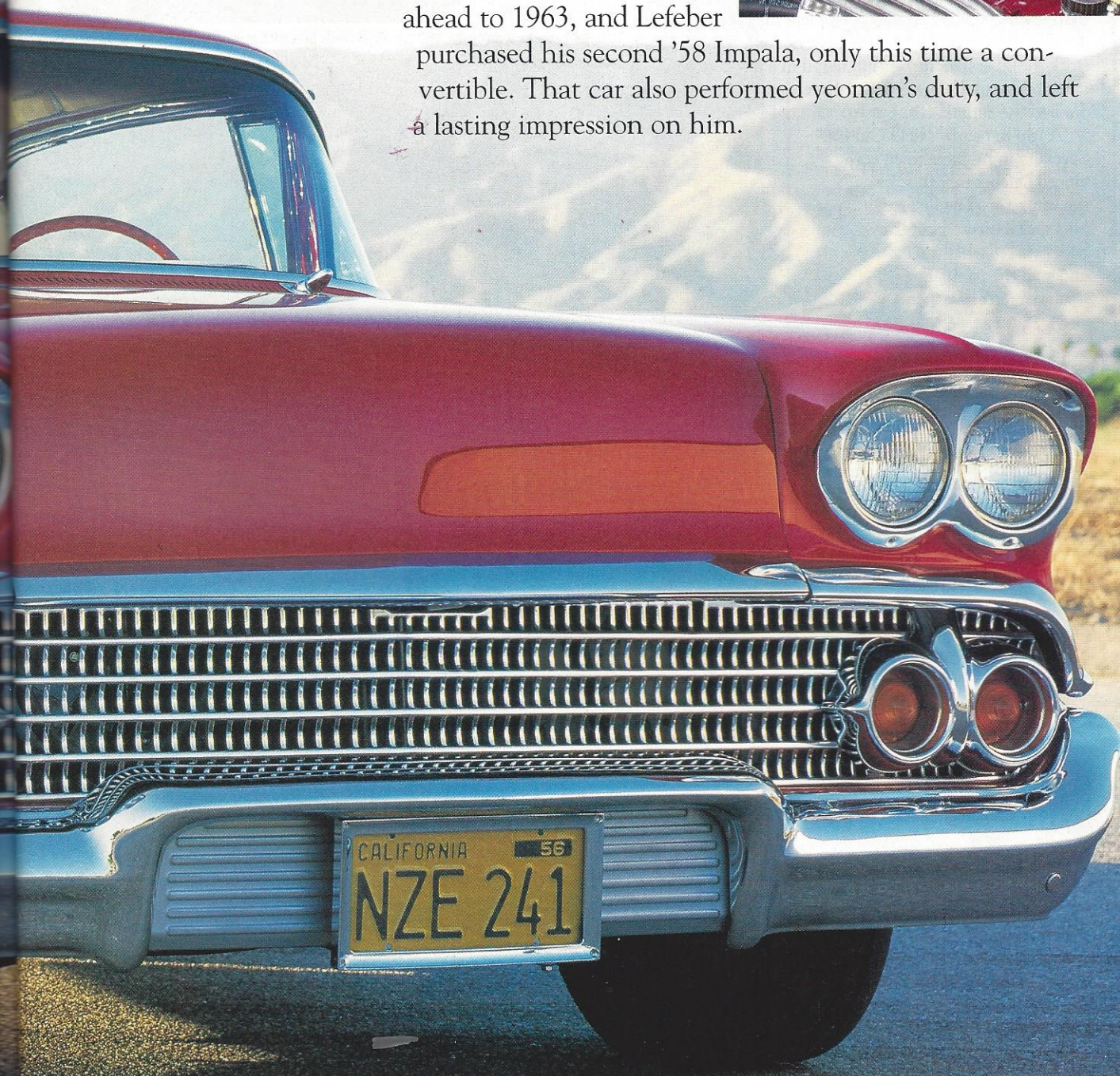
The Third '58 Impala Was the One to Keep



Bob Lefeber of Redlands, California, has settled into retirement just fine, thank you, and at the early age of 66. As a maintenance shop supervisor, Lefeber understood the benefits of keeping mechanical things in good shape. He also appreciated things that were built well to start with. Way back in 1959, he bought his first '58 Chevy Impala hardtop. The car was everything he wanted in a near-new car, and it served

him well over the years. Jump ahead to 1963, and Lefeber

purchased his second '58 Impala, only this time a convertible. That car also performed yeoman's duty, and left a lasting impression on him.



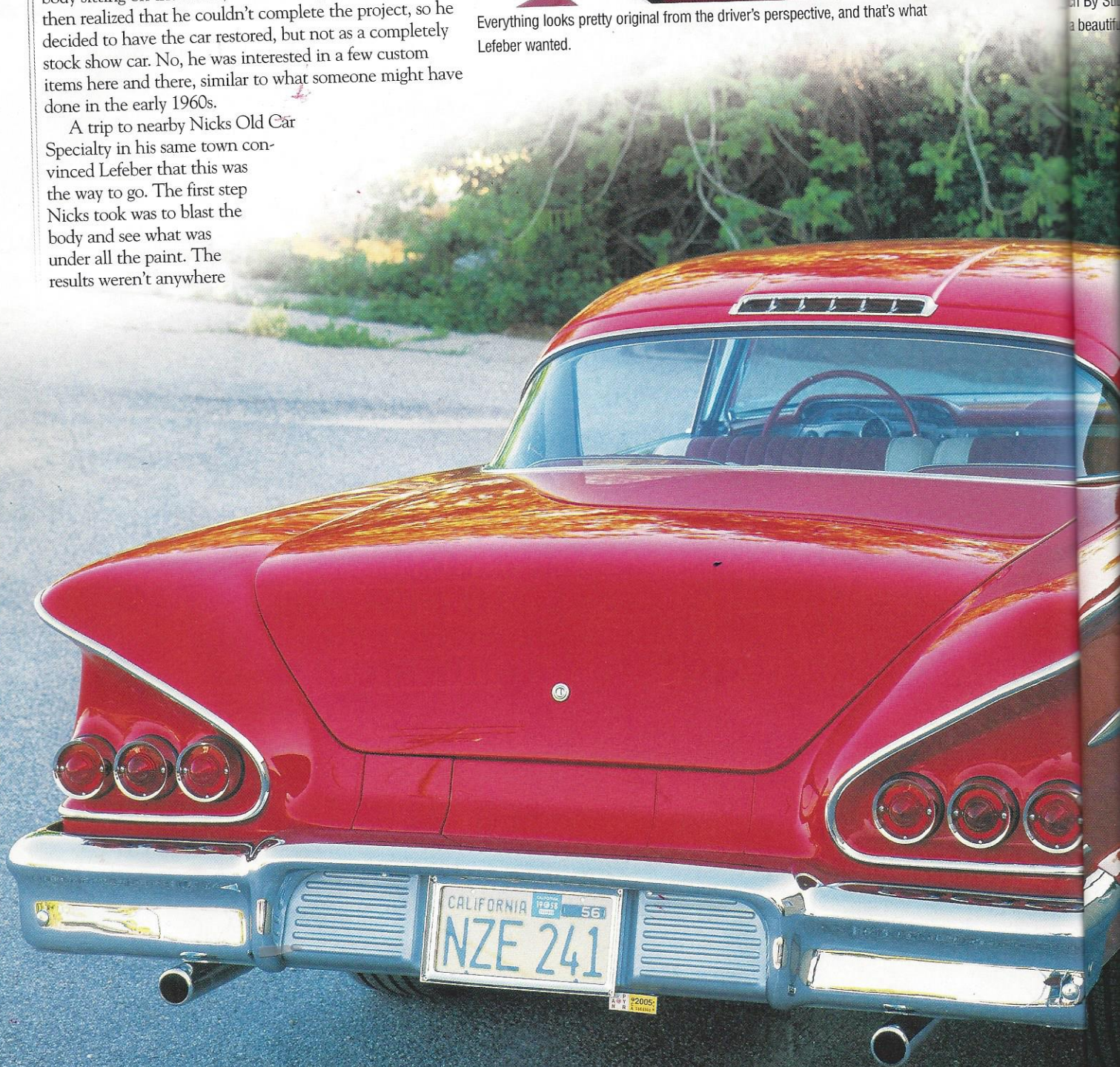
Fast-forward to current day ... Lefebvre is sitting around retired, thinking about those cool Impalas he used to have. Suddenly it hit him. He needed another one. Only this time he couldn't simply go buy a slightly used '58 since they're now 46 years old. He searched high and low and finally came up with a car that he thought would work. It was a '58 hardtop that he acquired for \$13,000, and it was in good-to-fair condition.

Well, he loved the car, but anything that can be described as "fair" condition simply wouldn't suffice for a guy who spent his life keeping mechanical things in tip-top shape. Lefebvre spent a lot of time taking the car apart piece by piece, and he got it all the way down to a bare body sitting on the frame, with all the pieces in boxes. He then realized that he couldn't complete the project, so he decided to have the car restored, but not as a completely stock show car. No, he was interested in a few custom items here and there, similar to what someone might have done in the early 1960s.

A trip to nearby Nicks Old Car Specialty in his same town convinced Lefebvre that this was the way to go. The first step Nicks took was to blast the body and see what was under all the paint. The results weren't anywhere

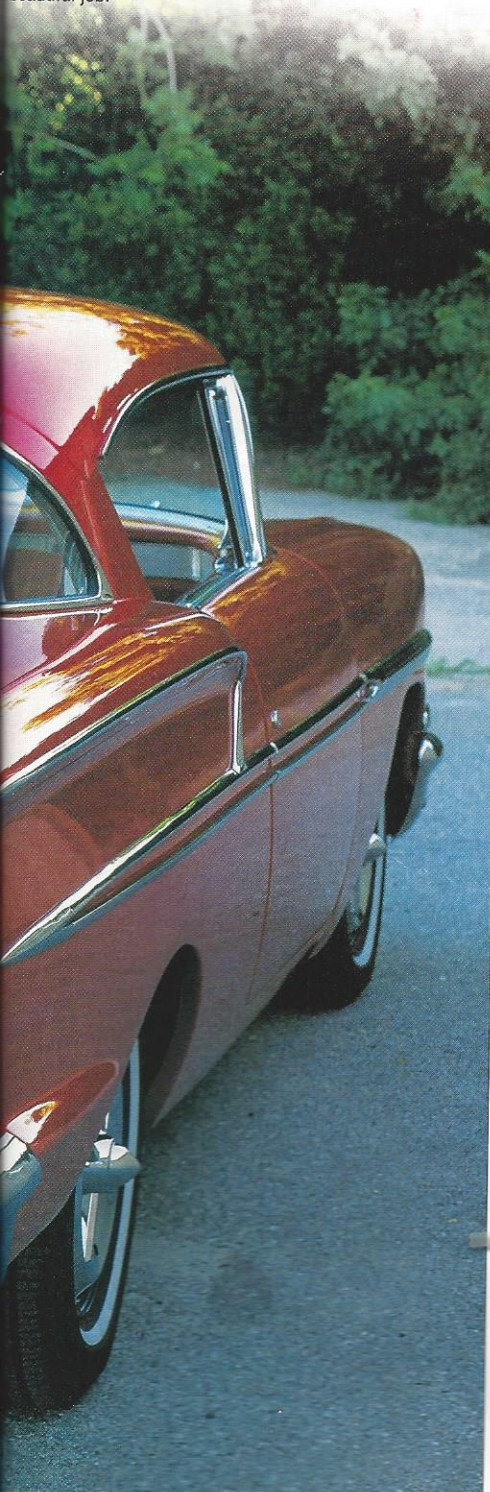


Everything looks pretty original from the driver's perspective, and that's what Lefebvre wanted.





By Stitch in Redlands did the interior in red and white vinyl.
beautiful job.



TRI-5 CHEVY STEERING PARTS



**BORGESON has
the parts to restore
your manual steering
or convert to late model
power steering.**

- Rebuilt long-shaft '55-'57 boxes
- Short shaft original boxes for use with after market columns
- Quick-steer manual boxes available!
- Weld-in or bolt-in GM 605 P.S. conversions
- Custom made rubber or braided stainless teflon P.S. hose kits
- New remote and self-contained P.S. pumps
- BORGESON's world-class needle bearing u-joints and components
- 58-64 P.S. passenger car conversion kits

**Call 860-482-8283
www.borgeson.com**

187 Commercial Blvd.
Torrington, CT 06790

BORGESON
UNIVERSAL COMPANY, INC.

**FREE
CATALOG**

Mullins
STEERING GEARS

The Brains.



It's an Ignitor with brains.

Ignitor II senses the current levels in the coil, and a powerful microcontroller adjusts the dwell period, for the best possible spark over the entire RPM range. Plus, you get the same features that made the original Ignitor so popular for the last 30 years: It fits entirely inside the distributor, installs quickly and easily, and you'll never change or adjust points again.

The Muscle.



**Flame-Thrower II. Our very hot
0.6 ohm, 45,000 volt, low
resistance, performance coil.**

We know that higher voltage allows larger spark plug gaps for added power, and smoother response. But, you'll only realize the full potential of a coil this hot with a sophisticated electronic triggering mechanism. While this coil is compatible with most capacitive discharge boxes, including the popular MSD 6 or 7 series, it was specifically engineered for our new Ignitor II electronic ignition (See above). This lethal combination averages 4 times more available energy between 3000 and 5000 RPM compared to stock points. See your dealer or call toll-free.

PERTRONIX
PERFORMANCE PRODUCTS

www.pertronix.com

800-827-3758 or 909-599-5955 Ext. 86

QUALITY PRODUCTS FOR OVER 30 YEARS

Ignitor • Flame-Thrower Coils, Plug Wires & Distributors
Patriot & Thunderbird Exhaust Products • Smithy's Mufflers