

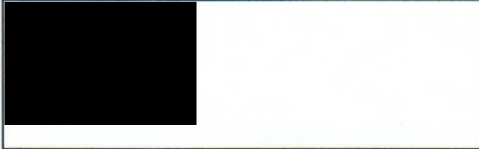


1416 W. Brooks St., Ontario, CA. 91762
Phone: (909) 984-1773 Fax: (909) 391-1526

INVOICE

Invoice No.	Date
339641	5/15/2012
Refer to Invoice Number When Remitting	

SOLD TO:



SHIP TO:



Sales Order	Cust No	Customer PO #	Order Date	Tax	Mark Shipment	Terms
0335187-0000	016199	033012	3/30/2012	E	RICHARD RARER	PREPAY
Sales Rep	Ship Date	Shipped Via	F.O.B. Point	Ins	Tracking Number	
JOSH LACHER	5/14/2012	ROADR	OUR DOCK	N	228495479	

Item	T	Quantity			Part Number/Revision	Description	Unit Price \$	Amount \$
		Order	B/O	Ship				
001	S	1.00		1.00	SPECIAL ORDER PART	STAGE 2 MUSTANG PACKAGE	10,099.00	10,099.00
003	S	1.00		1.00	730-7010-00	64 1/2 TO 70 MUSTANG S.B.F. BOLT-ON ENGINE MOUNTS 302/351 WINDSOR ONLY		
004	S	1.00	1.00		229-2222-00-LARGE	IFS SPINDLE STOCK MPR UPR/LWR		
005	S	-1.00		-1.00	229-2220-00-LARGE	IFS SPINDLE DROP MPR UPR/LWR DIFF. TAPER UPPER & LOWER		
						!!! DELETED !!!		
007	S	1.00		1.00	SWKR-P01-83-X54-38RG	REAR SWAY BAR KIT APPLICATION TCI REAR END/CHAS REAR SUSPENSION: Torque MODEL 65-70 MUST REG KIT FINISH: PLAIN STEEL		
009	S	1.00		1.00	230-2200-0P-TXQ-DCB	65-70 MUSTANG IFS FE A-ARMS FINISH: PLAIN STEEL		
TOTAL:								

No returns or exchanges without an RMA # and the original invoice #.

Packages must be inspected upon receipt. Any Shortages or Claims must be reported within 10 days.

Returned packages are subject to inspection before replacement/refund is given (subject to a 15% restocking fee).

THANK YOU FOR YOUR BUSINESS!!!!

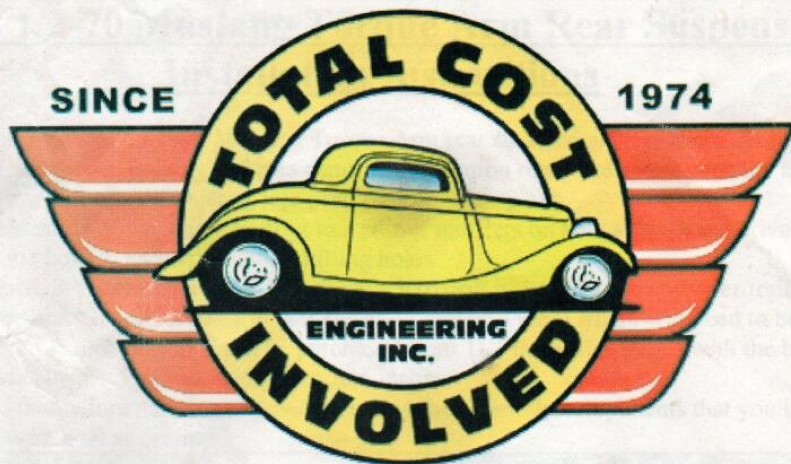
ORD1LZBI-000055-015

G:\Global\BUSINT\OE_INVOICE_PREPAYRPT

Customer

Page: 1

Rev: 5/16/2012 - 11:08:39AM



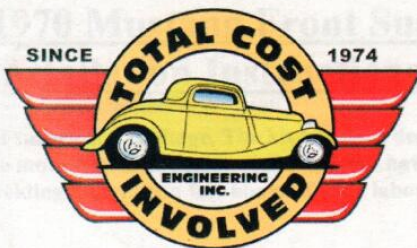
1964 1/2-70 Mustang Torque Arm Rear Suspension Install Sheet

1-866-925-1101

www.totalcostinvolved.com

CHECK ALL PARTS INCLUDED IN THIS KIT TO THE PARTS LIST BEFORE INSTALLATING OF THE KIT.
IF ANY PIECES ARE MISSING, PLEASE CONTACT: TOTAL COST INVOLVED 800-925-1101





1964 ½ - 1970 Mustang Front Suspension Install Sheet

1-866-925-1101

www.totalcostinvolved.com

All engine installations with this front end will require a rear sump oil pan.
289-302 Small Block Ford Motors (See notes @ end of installation instruction for 351 Windsor Milodon oil pan)

Milodon rear sump pan holds 7 quarts plus the filter, part number 31125.

Oil pump pickup #18380 CNC stainless dip stick #22040

Milodon

2250 Agate Court, Simi valley, Calif. 93065

1-805-577-5950

Canton Racing Products

Oil Pan 332-428 FE

Road Race 7 Quart Part#: 15874 / Oil Pump Pickup Truck # 15875

**CHECK ALL PARTS INCLUDED IN THIS KIT TO THE PARTS LIST BEFORE INSTALLATING OF THE KIT.
IF ANY PIECES ARE MISSING, PLEASE CONTACT: TOTAL COST INVOLVED 800-925-1101**

