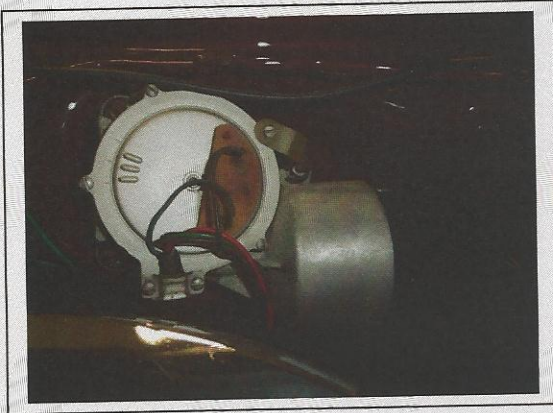


Wiper motor.

Incorrect 26" Radiator width w/Fan shroud.



Lower steering column.

Manual steering gear.



Hood latch on body.

Hood latch on hood.





Spare tire & wheel.



Trunk lid.



LH quarter panel.



RH quarter panel.



Trunk latch on body.



Trunk latch on lid.





RH lower control arm.



LH lower control arm.



K-Frame/Oil pan/Exhaust system. (Front)



Mufflers/Fuel tank. (Rear)



9.75" Dana 60 rear axle.



Axle to frame bumper.





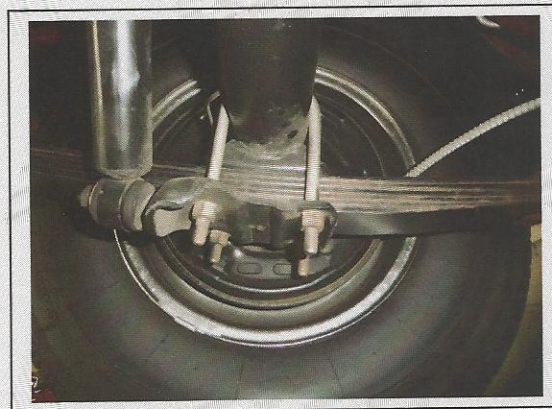
LH FT BRAKE.



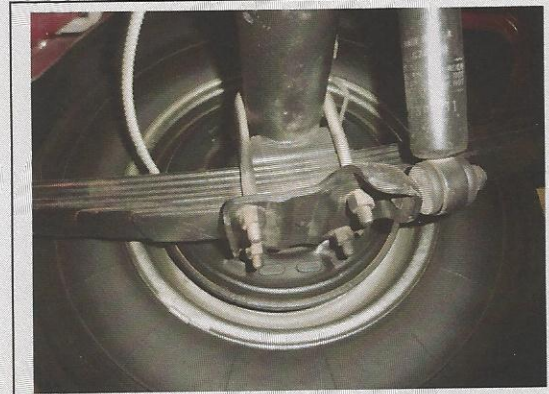
RH FT BRAKE.



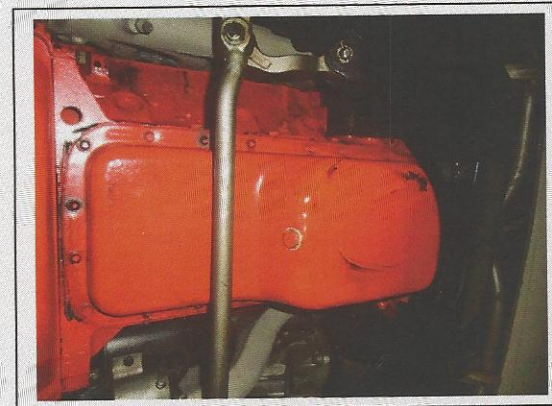
LH RR BRAKE.



RH RR BRAKE.



(Incorrect) OIL PAN.



AXLE-CENTER SECTION.





Public Law decal (missing).



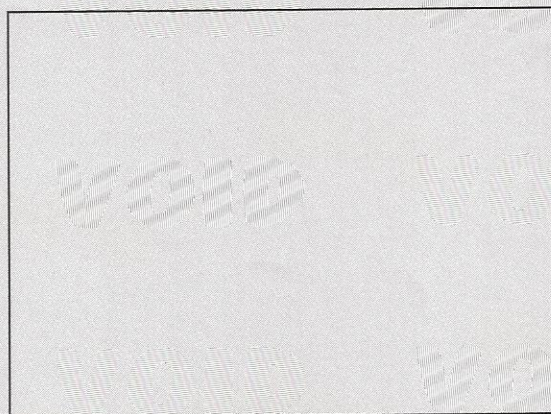
Tire label (missing).



Starting Instructions (missing).



No photo.



Do not wash or oil decal on air cleaner lid (missing).



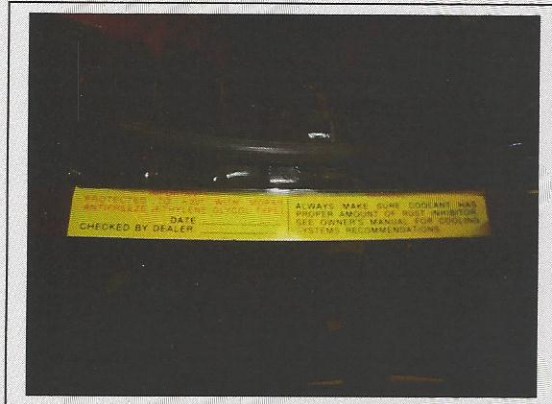
Air cleaner lid-decorative.





Mopar anti-freeze decal.

Idle label (missing).



Underhood harness label.

Lynch Road tire designation (missing).



No photo.

Jacking instructions.

Trunk wiring harness label.

