



# OLDE TYME CAR APPRAISALS

SITE 12 BOX 45 RR2



## CLASSIC AND SPECIALTY EVALUATION

### OWNER INFORMATION

Owner info

### VEHICLE INFORMATION

YEAR: 1969	MAKE: Chevrolet
MODEL: Chevelle SS	COLOR: Fathom Green
SERIAL NO: 136379K419671	BODY STYLE: 2dr Sport Coup hardtop
MILEAGE: 82,573 m.	LICENSE NO: BTJ-1780

### BODY

EXCELLENT VERY GOOD GOOD FAIR POOR

GENERAL CONDITION		✓			
GLASS		✓			
MOLDINGS & TRIM		✓			

COMMENTS: Repainted Base/Clear with OEM stripes. Has all the correct SS chrome, grille trim and Tail lamps. One small rust spot on the right 1/4. A couple of paintless dent repairable dents on the hood. Bumpette option "L" on coral Id tag indicates Kansas built SS

### INTERIOR

EXCELLENT VERY GOOD GOOD FAIR POOR

GENERAL CONDITION		✓			
MOLDINGS & TRIM		✓			

TYPE		ORIGINAL	✓	NON ORIGINAL	
MATERIAL	LEATHER	VINYL	✓	CLOTH	OTHER

COMMENTS: All original interior, front seat covers have been replaced. Buckets, Console, Trunk, clock.

# UNDERHOOD

EXCELLENT VERY GOOD GOOD FAIR POOR

GENERAL CONDITION				✓		
ENGINE SIZE	4 CYL 2 BBL	6 CYL 4 BBL ✓	V8 FI	OTHER TURBO	SIZE 396	LCUIN
TRANSMISSION	AUTOMATIC _____ STANDARD ✓ SPEED 3 _____ 4 ✓ 5 _____ 6 _____					
DIFFERENTIAL	RATIO _____ POSI-TRAC 3.73 NON POSI					

COMMENTS: Engine Code TD, 396-375 HP L-78, Trans Code P9B21C Muncie M-22 Close ratio 4 Speed, Diff Code C1 - 12 Bolt 3.73 Posi. Engine bay could use some minor detailing, engine block repaint.

# TRUNK

EXCELLENT VERY GOOD GOOD FAIR POOR

GENERAL CONDITION		✓			
COMMENTS: OEM mat and spare tire cover, OEM Decals on inside of trunk					

# WHEELS & TIRES

WHEELS	STOCK STEEL ✓	CUSTOM ALLOY	COVERS CHROME ✓
TIRE SIZE	FRONT 215-70 R14		REAR 215-70 R14
WEAR	LF 50 %	RF 50 %	LR 50 % RR 50 % SPARE 50 %
COMMENTS: OEM steel SS rally wheels with beauty rings and caps. Spare tire is also a rally wheel. Goodyear Eagle ST Tire with Raised white letters			

# OPTIONS

AIR CONDITIONING		AM/PM RADIO	✓	SUN ROOF	
CRUISE CONTROL		CASSETTE TAPE		T-TOP	
TILT COLUMN		CD PLAYER		VINYL ROOF	
POWER WINDOWS		CD CHANGER		TELESCOPIC	
POWER LOCKS		POWER ANTENNA		SPOILER	
POWER STEERING	✓	POWER SEATS		TRAILER HITCH	
POWER BRAKES	✓	POWER TRUNK		OTHER	

COMMENTS:

GUIDE BOOK VALUE (US) \$ \_\_\_\_\_

**CHANGES TO BASE VALUE**

ADD FOR OPTIONS	\$ —
ADD FOR MILEAGE	\$ —
ADD/DELETE FOR CONDITION	\$ - 9800
TOTAL AMOUNT - ALL CHANGES	\$ - 9800

MODIFIED BOOK VALUE \$ 88,290

**COMPARABLE UNITS LOCATED**

- A. \_\_\_\_\_  
B. \_\_\_\_\_  
C. \_\_\_\_\_

COMPARABLES AVERAGE VALUE \$ 80,390.00

APPRAISER'S OPINION OF VALUE \$ 80,000.00  
(80)

**OVERALL SUMMARY**

This is a numbers matching Chevrolet "SS". The vehicle has all the correct parts, mechanical components and ID Tags. There are a few small items that require attention and some detailing to be done. With these items done, in a better economy the value of this vehicle would be closer to 100,000.

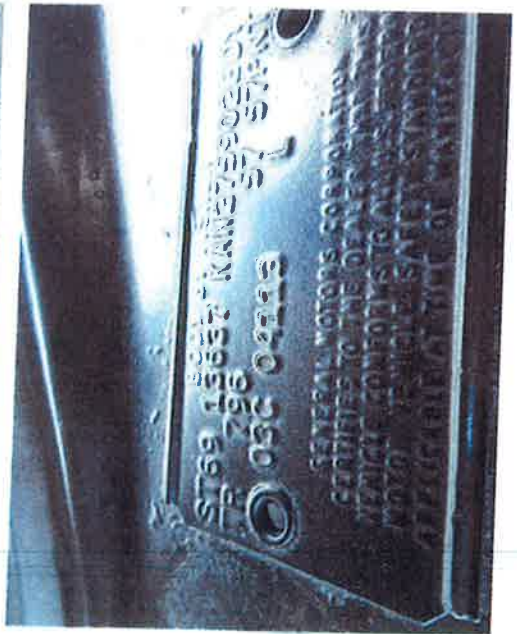
*DBL*  
"THIS APPRAISAL EXPIRES IN 12 MONTHS AND IS ACCURATE ONLY IF THE VEHICLE REMAINS UNCHANGED FROM THE DATE OF INSPECTION. THIS APPRAISAL CONSTITUTES A PROFESSIONAL OPINION ONLY AND IS NOT A STATEMENT OF GUARANTEE."

APPRAISER: *Brian Kalmbach*

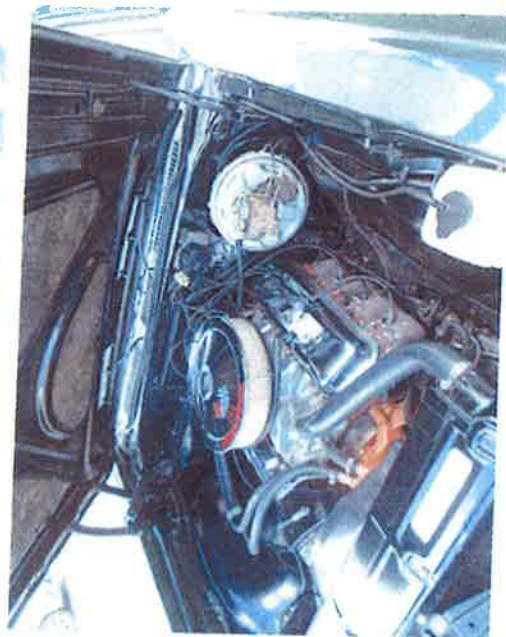
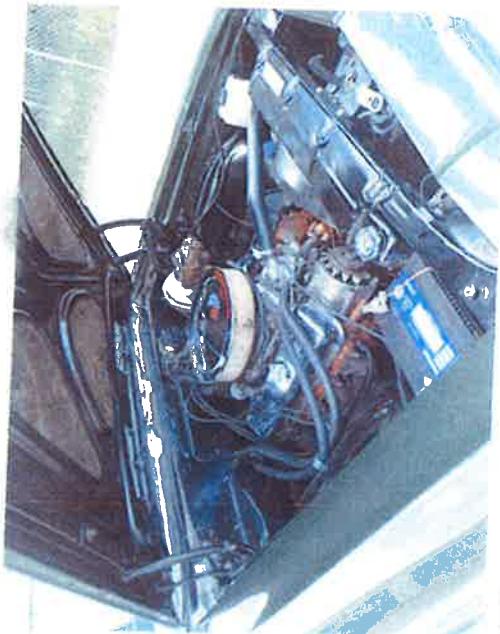
BRIAN KALMBACH

DATE: June 30, 2016









## 1969 Chevelle Engine ID Codes - Engine Pad

[ 1964 ] | [ 1965 ] | [ 1966 ] | [ 1967 ] | [ 1968 ] | [ 1969 ] | [ 1970 ] | [ 1971 ] | [ 1972 ]

The engine identification code consists of the engine assembly plant, the engine assembly date, and a 2 or 3 letter suffix indicating the cubic inch displacement, the horsepower rating, and generally, what type of transmission was to be installed with the engine. Manual transmissions required a bushing in the rear of the bellhousing where an automatic transmission did not. Many engine "accessories" such as the carburetor, distributor, and exhaust manifolds were not installed at the engine assembly plant but rather at the final assembly plant.

During the 1969 model year, the 396-cubic inch engine was increased in size to 402 cubic inches by means of a .030 increase in cylinder bore size. It is believed this was done due to less restrictive emission standards on engines 400 cubic inches and larger. It's believed these new 402cid engines can be identified in 1969 by the three letter suffix code and, to date, only one example has turned up.

Engine	Transmission	Notes
AD	230-1 140	TH-350
AM	230-1 140	Manual-3/4
AN	230-1 140	Powerglide
AO	230-1 140	TH-350
AP	230-1 140	Standard
AQ	230-1 140	Powerglide
AR	230-1 140	TH-350
BB	250-1 155-L22	Powerglide Torque Drive
BC	250-1 155-L22	Powerglide
BD	250-1 155-L22	TH-350
BE	250-1 155-L22	Manual-3
BF	250-1 155-L22	Standard
BH	250-1 155-L22	TH-350
DA	307-2 200	Manual-3/4
DC	307-2 200	Powerglide
DD	307-2 200	TH-350
DE	307-2 200	Manual-4
HA	350-4 300-L48	Manual-3/4
HB	350-4 300-L48	TH-350
HC	350-2 250-L65	Standard
HD	350-2 250-L65	TH-350
HE	350-4 300-L48	Powerglide
HF	350-2 250-L65	Powerglide
HP	350-4 300-L48	Standard
HQ	350-4 255-LM1	Manual-3/4
HR	350-4 255-LM1	Powerglide
HS	350-4 255-LM1	TH-350
JA	396-4 325-L35	Manual-3/4
JC	396-4 350-L34	Standard
JD	396-4 375-L78	Standard
JE	396-4 350-L34	TH-400

**Chevelle SS 1964-1972**  
Muscle Car Source Book.  
Your reference guide for  
1964 through 1972  
Malibu SS, SS396, and  
SS-optional Chevelles.  
Get your copy today!

**WINVOICES.COM**  
Mention you saw it on  
**CHEVELLESTUFF**  
T O P

Chevrolet Reproduction Window Stickers

**Chevelle**  
Data and 1964-1972  
ID Guide

Facts, Production Numbers, Option Codes,  
Data Plate Information & More



Dale McIntosh

INCLUDES

Wagons, El Camino and Monte Carlo Models

1964-1972 Chevelle book is in final review!

Scheduled for August 15, 2016 release but

may be released sooner and you can

preorder your copy now on Amazon.com

**1970 Chevelle SS**  
"In Detail"  
Book Project



Book is tentatively done and now under review  
and/or revision by publisher. Watch for news!

Have An  
Entrepreneurial Idea?  
Maybe ChevelleStuff  
can help







#F



Comparable unit

**1969 CHEVROLET CHEVELLE SS**

1969 Chevelle SS 396/375 L-78, Rotisserie restoration! Classic Car Marketing, Inc. Southern California's premier marketing company is pleased to introduce this new listing offered for sale by one of our clients. This 1969 Chevelle SS 396 L-78 is a very rare black on black beauty and is a professionally built rotisserie restoration. 375hp. 4 speed Muncie M-20 with 2.52 low first gear. Rectangular port heads, 4 bolt main block, solid lifter cam, standard bore, standard steel crank. 12 bolt rear end with new blueprinted 3.73 posi, new axles, and new bearings. All new OE interior with bucket seats, and new glass all around. Excellent, solid, nice "new" car inside, outside, and underside too. Offered at \$88,000 OBO. For more information please visit our website at [www.classiccarmarketing.net](http://www.classiccarmarketing.net) or call us at 619-972-7073. Please mention the vehicle you are inquiring about so we can respond promptly. Inspections are encouraged before any purchase, of any vehicle, anywhere.

For more information, contact us at (619) 972-7073 or email us at [askus@classiccarmarketing.net](mailto:askus@classiccarmarketing.net). Please be sure to mention the specific vehicle you are inquiring about so we can respond promptly.

[info@classiccarmarketing.net](mailto:info@classiccarmarketing.net)

Price: \$88,000.

**Classic Car Marketing Inc.**

619-972-7073

ORANGE, CA

Mention [AutoBuy.com](http://www.autobuy.com) when you call.

